

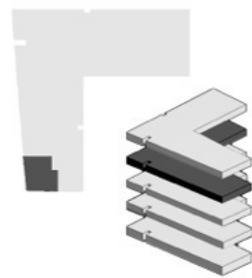


RESIDENTIAL COMPLEX

GROW GREEN

BUILDING 1





APT/410
FOURTH FLOOR
QUOTE +11.22

LIVING ROOM
KITCHEN
2 BEDROOMS
TOILET
BALCONY



APARTAMENT 410

APARTAMENT 410

STAIRCASE/ELEVATOR [01/02](#)

APARTAMENT TYPE:

2+1



TOTAL AREA:

96m²



COMMON AREA:

16m²



APARTAMENT AREA:

80m²



ORIENTATION:

SOUTH-WEST



APARTAMENT 410

